



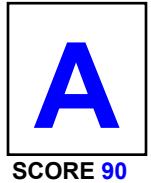
County of Riverside
DEPARTMENT OF ENVIRONMENTAL HEALTH
 www.rivcoeh.org

FOOD ESTABLISHMENT INSPECTION FORM

FACILITY NAME Santorini Greek Cafe				DATE 4/4/2022	TIME IN 11:00 AM	TIME OUT 12:30 PM
ADDRESS 68375 E Palm Canyon Dr, Cathedral City, CA 92234				FACILITY DESCRIPTION Not Applicable		
PERMIT HOLDER Yesim Oztoprak				EMAIL bestgreekfood@yahoo.com		Major Violations 0
PERMIT # PR0067946	EXPIRATION DATE 09/30/2022	SERVICE Routine inspection	REINSPECTION DATE Next Routine	FACILITY PHONE # (760)831-3663	PE 3620	DISTRICT 0025
					INSPECTOR NAME Edina Fang	Points Deducted 10

The conditions listed below correspond to violations of the California Health and Safety Code and/or Riverside County Ordinances and must be corrected as indicated by the enforcement officer. The Department of Environmental Health appreciates your cooperation.

Failure to correct listed violation(s) prior to the designated compliance date may necessitate an additional reinspection at a charge determined by Riverside County Ordinance 640.



Major / Minor Violations: Major Violations are those that pose an imminent risk to public health and warrant immediate closure of the food facility or immediate correction. Minor Violations are those violations that do not pose an imminent public health risk, but do warrant correction.

GRADE REPRESENTS THE FOLLOWING RANGES: A = 100-90 Passed inspection / meets minimum health standards. B = 89-80 Did not pass inspection / does not meet minimum health standards. C = 79-0 Failed inspection / conditions exist which may pose a potential or actual threat to public health and safety. The facility is required to display a grade card in a conspicuous place selected by the Enforcement Officer. The grade card shall not be concealed and can only be removed or relocated by the Enforcement Officer per County Ordinance 492 / County Code Section 8.40.020

○ In = In compliance + COS = Corrected on-site ○ N/O = Not observed ○ N/A = Not applicable ○ OUT = Out of compliance

DEMONSTRATION OF KNOWLEDGE			COS	MAJ	OUT
In	N/A	1. Food safety certification Jimmi Calva/ServSafe/6-2022			2
EMPLOYEE HEALTH AND HYGIENIC PRACTICES					
In		2. Communicable disease; reporting, restrictions and exclusions		4	
In	N/O	3. No persistent discharge from eyes, nose, and mouth			2
In	N/O	4. Proper eating, tasting, drinking or tobacco use			2
PREVENTING CONTAMINATION BY HANDS					
In	N/O	5. Hands clean and properly washed; gloves used properly		4	2
In		6. Adequate handwashing facilities supplied and accessible			2
TIME AND TEMPERATURE RELATIONSHIPS					
In	N/O	N/A		4	2
In	N/O	N/A		4	2
In	N/O	N/A		4	2
In	N/O	N/A		4	2
In	N/O	N/A		4	2
PROTECTION FROM CONTAMINATION					
In	N/O	N/A			2
In		13. Food: unadulterated, no spoilage, no contamination		4	2
In	N/O	N/A		4	2
		14. Food contact surfaces: clean and sanitized 100 ppm chlorine, manual. / above 100		4	2

FOOD FROM APPROVED SOURCES			COS	MAJ	OUT
In		15. Food obtained from approved sources		4	2
In	N/O	N/A			2
In	N/O	N/A			2
CONFORMANCE WITH APPROVED PROCEDURES					
In		N/A			2
CONSUMER ADVISORY					
In		N/A			1
SCHOOL AND HEALTHCARE PROHIBITED FOODS					
In		N/A		4	2
WATER / HOT WATER					
In		21. Hot and cold water available Water Temperature 125 F°F		4	2
LIQUID WASTE DISPOSAL					
In		22. Sewage and wastewater properly disposed		4	2
VERMIN					
In		23. No rodents, insects, birds, or animals		4	2
In		N/A			1

SUPERVISION / PERSONAL CLEANLINESS	OUT
25. Person in charge present and performs duties, demonstration of knowledge	2
26. Personal cleanliness and hair restraints	1
GENERAL FOOD SAFETY REQUIREMENTS	
27. Approved thawing methods, frozen food storage	1
28. Food separated and protected from contamination	2
29. Washing fruits and vegetables	1
30. Toxic substances properly identified, stored, used	1
FOOD STORAGE / DISPLAY / SERVICE	
31. Adequate food storage; food storage containers identified	1
32. Consumer self-service	1
33. Food properly labeled; honestly presented; menu labeling	1

EQUIPMENT / UTENSILS / LINENS	OUT
34. Utensils and equipment approved, good repair	1
35. Warewashing: installed, maintained, proper use, test materials	1
36. Equipment / utensils: installed, clean, adequate capacity	1
37. Equipment, utensils, and linens: storage and use	1
38. Adequate ventilation and lighting; designated areas, use	1
39. Thermometers provided and accurate	1
40. Wiping cloths: properly used and stored	1
PHYSICAL FACILITIES	
41. Plumbing: properly installed, good repair	1
42. Refuse properly disposed; facilities maintained	1
43. Toilet facilities: properly constructed, supplied, cleaned	1
44. Premises; personal item storage and cleaning item storage	1

PERMANENT FOOD FACILITIES	OUT
45. Floors, walls, ceilings: good repair / fully enclosed	1
46. Floors, walls, and ceilings: clean	1
47. No unapproved private homes / living or sleeping quarters	1
SIGNS / REQUIREMENTS	
48. Last inspection report available	
49. Food Handler certifications available, current, and complete	1
50. Grade card and signs posted, visible	
COMPLIANCE AND ENFORCEMENT	
51. Plans approved / submitted	1
52. Permit available / current	
53. Permit suspended / revoked	
54. Voluntary condemnation	1
55. Impound	



FOOD ESTABLISHMENT INSPECTION FORM

FACILITY NAME Santorini Greek Cafe	DATE 4/4/2022	PERMIT # PR0067946
--	-------------------------	------------------------------

6. ADEQUATE HANDWASHING FACILITIES SUPPLIED & ACCESSIBLE

POINTS

2

Inspector Comments: Maintain all handwash sinks stocked with pump soap and paper towels in mounted dispensers, and free from obstructions. Observed the following:
 -paper towel dispenser empty at the kitchen and hallway handsink.
 -kitchen handsink obstructed by a large cutting board. The cutting board was relocated while inspector was onsite.

Violation Description: Adequate facilities exclusively for handwashing shall be provided in food preparation areas and within toilet rooms. Handwashing soap, and towels or drying device, shall be provided in dispensers. Handwashing facilities shall be clean, unobstructed, and accessible at all times for employee use. (113953, 113953.1, 113953.2, 114067(f), 114143 (e))

7. PROPER HOT & COLD HOLDING TEMPERATURES

POINTS

0

Inspector Comments: Maintain potentially hazardous food at internal temperature of 41 degrees F or below, or 135 degrees F or above. Observed the pasititsio at internal temperature of 68 degrees F. According to the employee, this item was maintained in the oven over night, and was recently placed in the reach in refrigerator. Owner voluntarily discarded the pastitsio. See violation 54.

Violation Description: Potentially hazardous food shall be held at or below 41°F / 45°F or at or above 135°F. Potentially hazardous food removed from proper holding temperature during preparation must be returned to proper temperature within 2 hours. Potentially hazardous food shall be received at proper temperature without evidence of temperature abuse. (113996, 113998, 114037)

14. FOOD CONTACT SURFACES; CLEAN AND SANITIZED

POINTS

2

Inspector Comments: Maintain food contact surfaces cleaned and sanitized. Observed the following:
 -both ice machines with biofilm in the interior compartments.
 -baklava utensils at the front counter stored in room temperature standing water with debris. Store the baklava utensils in a clean, dry, smooth and easily cleanable container.

Violation Description: All food contact surfaces of utensils and equipment shall be properly cleaned and sanitized. Food contact surfaces shall be clean to the sight and touch, no accumulation of dust, dirt, food residue, and other debris. (114097, 114099.1, 114099.2, 114099.4, 114099.6, 114099.7, 114101(b-d), 114105, 114109, 114111, 114113, 114115, 114117, 114118, 114123, 114125(b), 114130.2, 114130.5, 114141)

23. NO RODENTS, INSECTS, BIRDS, OR ANIMALS

POINTS

2

Inspector Comments: Eliminate the flies and roaches from the facility. Observed the following:
 -flies within the facility, not landing on food or food contact surfaces.
 -roach casings on the floors of the dry storage areas. Clean this area. Employee stated that the facility was treated for roaches on 31 MAR 2022. Inspector observed two live roaches crawling on a wall. Inspector did not observe live nor dead roaches on food/food contact surfaces. Inspector requested the owner to provide the two most recent pest control invoices. Email these invoices to inspector at efang@rivco.org.

Violation Description: Each food facility shall be kept free of vermin. Only approved animals, such as service animals or decorative fish in aquariums, are permitted inside a food facility. (114259.1, 114259.4, 114259.5)

28. FOOD SEPARATED AND PROTECTED FROM CONTAMINATION

POINTS

2

Inspector Comments: Protect food from potential contamination. Observed a functional ice machine in the hallway where customers may pass through to use the restroom. Relocate this ice machine to the kitchen area, or lock it to prevent intentional contamination by the public. Store only sealed by the manufacturer items in the hallway freezers.

Violation Description: All food shall be separated and protected from contamination. (113984, 113986, 114060, 114067(a, d, e), 114069(a, d), 114073, 114077, 114089.1(c), 114143(c))



FOOD ESTABLISHMENT INSPECTION FORM

FACILITY NAME Santorini Greek Cafe	DATE 4/4/2022	PERMIT # PR0067946
--	-------------------------	------------------------------

34. UTENSILS AND EQUIPMENT APPROVED, GOOD REPAIR

POINTS

1

Inspector Comments: All equipment must be NSF/ANSI approved for commercial use. Observed the following:
 -domestic Ninja mixers, domestic microwave, tabletop fryer and a table top flat griddle that does not have specifications. Remove these items from facility.
 -particle board storage shelves. The storage shelves must be smooth, easily cleanable, non absorbent, and durable.
 -reuse of single use containers such as yogurt buckets for direct food storage. Discard single use containers once the original product is depleted.
 -crates used to store utensils. Store utensils in a clean, dry, smooth and easily cleanable container.
 -deteriorated caulking at the prepsink and three compartment sink. Replace the caulking.

Provide at least a one inch air gap from the end of the prep sink drainline to the overflow rim of the floorsink.

Install vent covers where missing on the ice machine and refrigeration/freezer units.

Violation Description: All utensils and equipment shall be approved and in good repair. (114130, 114130.1-114130.6, 114132, 114133, 114137, 114175, 114177, 114257)

42. REFUSE PROPERLY DISPOSED: FACILITIES MAINTAINED

POINTS

0

Inspector Comments: Eliminate the leak from the shared trash compactor.

Violation Description: All food waste and rubbish shall be kept in leakproof and rodent-proof containers. Containers shall be covered at all times. All waste must be removed and disposed of as frequently as necessary to prevent a nuisance. The exterior premises of each food facility shall be kept clean and free of litter and rubbish. (114244, 114245, 114245.1, 114245.2, 114245.3, 114245.4, 114245.5, 114245.6, 114245.7, 114257.1)

45. FLOORS, WALLS, CEILING: GOOD REPAIR / FULLY ENCLOSED

POINTS

1

Inspector Comments: Maintain the floors, walls, and ceilings clean and in good repair. Observed the following:
 -debris on the floor beneath the cooking equipment and prep areas.
 -acoustic ceiling tile in the waitress station. Replace the acoustic ceiling tile with a smooth and easily cleanable ceiling tile.
 -missing air vent over the prep area. Install the air vent.
 -broken floor tiles and cove base tiles near the delivery door. Replace these tiles.

Violation Description: The floors, walls, ceilings finishes must be of an approved material, durable, smooth, nonabsorbent, and easily cleanable. Food facilities shall be fully enclosed. (114143 (d), 114257, 114266, 114268, 114271, 114272)

51. PLANS APPROVED / SUBMITTED

POINTS

0

Inspector Comments: Observed the addition of a gas double burner stove unit. This double burner must remain underneath the existing approved hood. Obtain approval from the City of Cathedral City and from the Fire Department for use of the gas double burner stove.

Remove the unapproved side hood from facility immediately. This facility must submit plans to this Department to extend the hood or to add additional equipment. You can reach plan check at 760-320-1048.

Violation Description: A person proposing to build or remodel a food facility shall submit plans for approval prior to the commencement of work. (114380)

54. VOLUNTARY CONDEMNATION

POINTS

0

Inspector Comments: See violation 7.

Violation Description: I, as the person in charge, hereby voluntarily agree to the condemnation and destruction of the food(s) listed in this report, said food(s) being alleged unfit for human consumption and in violation of California Health and Safety Code, Section 113980. I hereby release the County of Riverside, Department of Environmental Health and authorized agents from any and all responsibility.

Overall Inspection Comments

Routine inspection conducted in conjunction with a complaint investigation (CO-82502).



County of Riverside
DEPARTMENT OF ENVIRONMENTAL HEALTH
www.rivcoeh.org

FOOD ESTABLISHMENT INSPECTION FORM

FACILITY NAME Santorini Greek Cafe	DATE 4/4/2022	PERMIT # PR0067946
---------------------------------------	------------------	-----------------------

Did you know that effective January 1, 2018, the California Health and Safety Code was amended to make it easier for food facilities to donate food? Please consider donating your excess food product to a local food bank, pantry, or soup kitchen. As a good faith food donor, you are protected from civil and criminal liability if the food product later causes harm to its recipient, unless the injury is a direct result of gross negligence or intentional misconduct in the preparation or handling of the donated food. See Section 171425 of the Civil Code and Sections 114432 to 114434 inclusive of the Health and Safety Code. For more information visit our website at www.rivcoeh.org.

Signature

Signature not captured due to
COVID 19 pandemic.

Kamil Gurel (manager)
Person in Charge

04/04/2022

Edina Fang
Environmental Health Specialist

04/04/2022

REASONS FOR IMMEDIATE CLOSURE OF A FOOD FACILITY

Per California Health and Safety Code Section 114409 (a):
 "If any imminent health hazard is found, unless the hazard is immediately corrected, an enforcement officer may temporarily suspend the permit and order the food facility immediately closed."

A food facility may be closed for any of the following reasons:

- Overflowing sewage (inside or outside the facility)
- No potable water
- No hot water
- No electricity
- Rodent or insect infestation
- Any other conditions at the facility that may create an imminent public health risk

In addition to the reasons above, Per California Health and Safety Code Section 114411:

"The enforcement agency may, after providing opportunity for a hearing, modify, suspend, or revoke a permit for serious or repeated violations of any requirement of this part or for interference in the performance of the duty of the enforcement officer."

No foil or cardboard on shelves!



PROPER FOOD STORAGE IN REFRIGERATORS AND FREEZERS

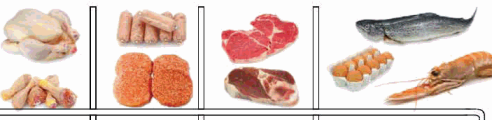
Ready-to-Eat Food



Cooked Food



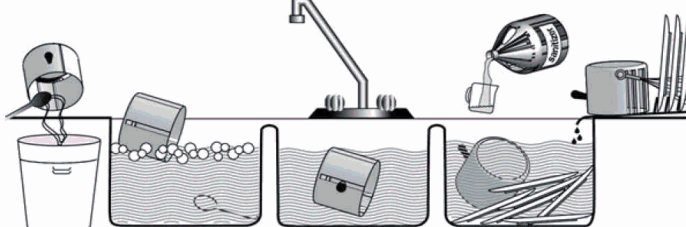
Raw Meat, Raw Eggs



Store cooked and ready-to-eat food above raw food to avoid cross-contamination.
 Keep all food covered to prevent contamination

MANUAL SANITIZING OF EQUIPMENT AND UTENSILS USING A THREE COMPARTMENT SINK

1. **SCRAPE**, clean, or soak items as necessary before washing.
2. **WASH** items in detergent and hot water of at least 100°F in the first sink.
3. **RINSE** items in clear water in the second sink.
4. **SANITIZE** by submerging each item in a sanitizing solution in the third sink. Use one of the following sanitizing methods:
 - 100ppm of a chlorine based sanitizer for a minimum of 30 seconds in the solution
 - 200ppm of a quaternary ammonium based sanitizer for a minimum of 60 seconds in the solution
 - 25ppm of an iodine based sanitizer for a minimum of 60 seconds in the solution
 - Water at a temperature of 171°F for a minimum of 30 seconds in solution
5. **AIR DRY** all items on the drain board.



1 SCRAPE 2 WASH 3 RINSE 4 SANITIZE 5 AIR DRY

PROPER COOLING OF FOOD IN YOUR FACILITY

Potentially hazardous foods should always be rapidly cooled.

TIME IS THE KEY FACTOR IN PROPER COOLING

- Foods must cool from 135°F to 70°F in 2 hours or less
- Foods must cool from 70°F to 41°F in 4 hours or less

Use one of the following methods to cool food properly:

- Break large foods down into smaller portions and place in shallow pans no more than 4 inches deep. Metal pans cool better than glass or plastic pans.
- Add ice as an ingredient to replace water used in the recipe.
- Place foods within an ice bath and frequently stir the foods to speed the cooling process.
- Loosely cover foods so that heat and steam can escape during cooling.
- Arrange containers within a refrigeration unit so that air can flow properly around containers.
- Use special equipment like chill paddles or blast chillers to rapidly bring down food temperature.

Use an accurate thermometer to verify the food is being cooled within proper timeframes.

PROPER FOOD THAWING METHODS



1. Under refrigeration
2. In a microwave oven on "defrost"
3. Submerged under cold running water in an approved preparation sink for no longer than 2 hours
4. As part of the cooking process



INTERNAL COOKING TEMPERATURES

Use a probe thermometer to take internal cooking temperatures

135°F for 15 seconds	145°F for 15 seconds	145°F for 15 seconds	145°F for 15 seconds	155°F for 15 seconds	155°F for 15 seconds	165°F for 15 seconds	165°F for 15 seconds

Food temperature cannot be felt - use your probe thermometer!



FOR QUESTIONS OR COMMENTS CONTACT YOUR LOCAL AREA OFFICE

BLYTE
 260 N Broadway
 Blythe, CA 92225
 Phone 760-921-5090
 Fax 760-921-5085

CORONA
 2275 S Main St #204
 Corona, CA 92882
 Phone 951-273-9314
 Fax 951-520-8319

HEMET
 800 S Sanderson Ave #200
 Hemet, CA 92545
 Phone 951-766-2824
 Fax 951-766-7874

INDIO
 47-950 Arabia St #A
 Indio, CA 92201
 Phone 760-863-8287
 Fax 760-863-8303

MURRIETA
 30135 Technology Dr #250
 Murrieta, CA 92563
 Phone 951-461-0284
 Fax 951-461-0245

PALM SPRINGS
 554 S Paseo Dorotea
 Palm Springs, CA 92264
 Phone 760-320-1048
 Fax 760-320-1470

RIVERSIDE
 4065 County Circle Dr #104
 Riverside, CA 92503
 Phone 951-358-5172
 Fax 951-358-5017